



# INSTALLATION MANUAL

Manual Brel Bi-Directional Rollerblind motor

## BLE45-20

Read the manual before you begin the installation. If these instructions are not followed, this may lead to defects and injury in which warranty can't be claimed.



[www.brel-home.com](http://www.brel-home.com)

Visit our website for more manuals and information



BLE45-20

Scan the QR code here for the manual to download & view instructional videos



## Table of Content

Warning	2
Wiring/Installing the motor/Works with BREL HOME	3
Technical data of the motor/Reach/Charging the motor	4
Functions remote control	5
Settings	5

### Warning



Do not operate the motor in humid surroundings.



BREL-Motors declares that this motor has been manufactured according to the guidelines of the CE standard 1999/5/EC



The motor must be protected from direct moisture influences.



Keep the antenna in a good condition and do not shorten. The antenna should not come into contact with other metal parts otherwise it will reduce the function.



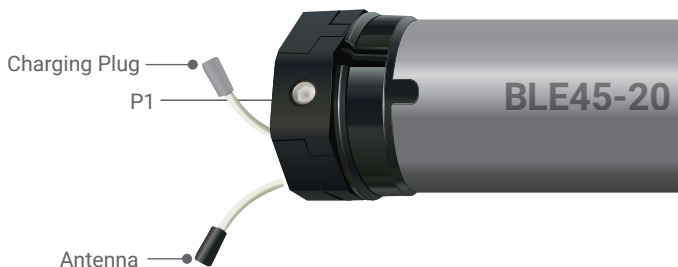
The motor must be installed correctly.



Do not allow children to play with the roller blind control unit. Keep remote controls out of reach of children. Children cannot recognize the dangers of electrical equipment and are therefore not allowed to work with it

**Keep these instructions for future reference**

## Wiring



## Installing the Motor

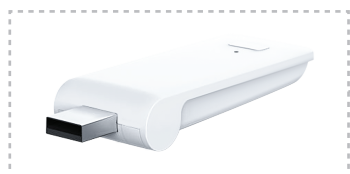
**These assemblies are usually already done in the factory**

Attach the crown and wheel to the motor and place the clip on the shaft of the motor so that the wheel is fixed to the motor.

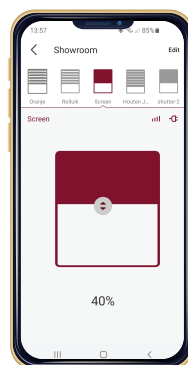
Install the motor with the motorbracket on the product and take care that it is secured.

Place the motor in the tube of the roller/shutter.

## Works with BREL HOME



Brel-Home-USB



With the Brel-Home-USB you can control your motor with your Phone. You can make a time schedule and make scenario's. The Brel-Home-USB can be connected to Siri, Google Home and Alexa.

## Technical data of the motor

BLE45-20

Motor Voltage	DC 12V
Charge Voltage	DC 12V
Maximum Ampere Charger	1.75 A
Power	21 W
Torque	20 Nm
Speed	10 rpm
Amperage	4.1 A
Moisture and Dust	IP 44

Storage capacity is up to 20 channels

Working temperature of the motor

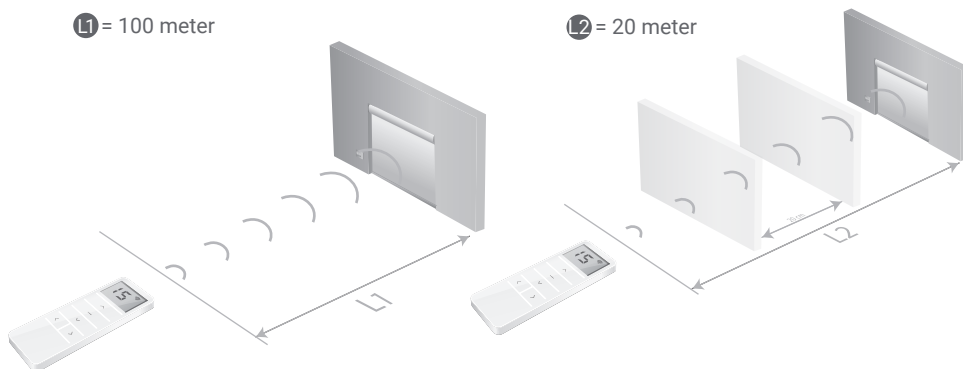


**Heavy Use:** - 10°C tot +40°C  
**Normal Use:** - 20°C tot +70°C

## Reach

L1 = 100 meter

L2 = 20 meter



OUTDOOR

INDOOR

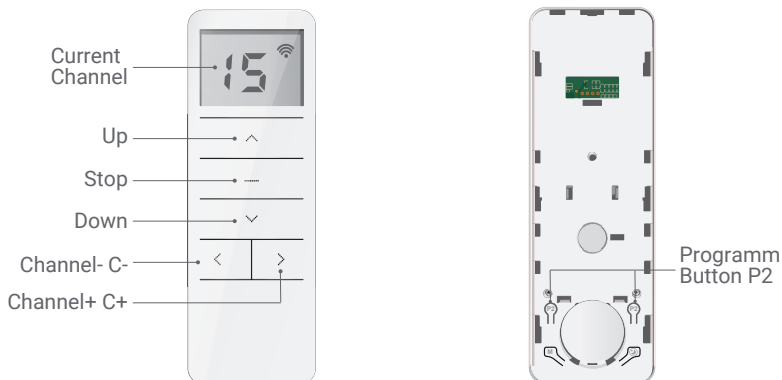
## Charging the motor

The motor needs to be charged with a DC-212(EU), DC-213(UK) or DC-200 (US).

When the battery is empty the motor will beep 5 times.

When charging the motor the LED will blink red. When it is full the LED will be green continuously.

## Functions Remote Control



There are 2x P2 buttons, no matter which one you press.

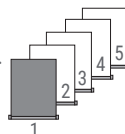


Scan the QR code here for the manual to download & view instructional videos

BLE45-20

### Step 1 Setting up the first remote/channel

- The remote control can transmit 15 channels and therefore control multiple blinds. First, select a channel for operating the relevant roller blind. Make sure that you select a free channel (we recommend only 1 product per channel).
- This remote has also channel 0. All blinds programmed in channel 1~15 are automatically programmed in this channel 0 and can be operated all at once.
- In case you have selected the wrong channel, go to **Resetting factory settings**.



► **Select the desired channel.**

### Step 2 Establishing connection

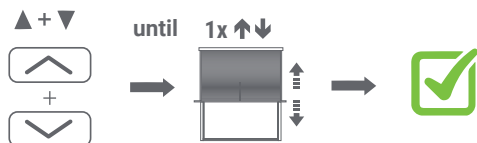
- In the procedures described here is a maximum interval of 10 seconds to complete each subsequent action: if you wait any longer, the system will leave the edit mode.
- Normally a button only needs to be pressed shortly. If you need to press and hold a button for several seconds this will be state clearly.
- The system will confirm each completed step with moving the blind up and down (↕).
- If a procedure does not play out as described, wait for 20 seconds and start again from the beginning of that step/procedure.



- If NO end positions are set, the product will move in the pulse / step operation. Go then to STEP 3. If end positions are set, the product will continue to its end position. Go then to STEP 5.
- WARNING:** It is possible that the correct end positions have not been set. Go then to OPTION A.

### Step 3 Adjusting the direction of rotation *(Only if the direction of rotation is not correct)*

Only possible if no end positions are set.



Press **UP** and **DOWN** button simultaneously, until the product moves.

The direction of rotation of the motor is **OK**.

### Step 4 Setting the End Limits

To move the motor one step: briefly press the **UP** or **DOWN** button

To move the motor continuously: press the **UP** or **DOWN** button for 3 seconds (ATTENTION! Press **STOP** in time)

1. Set the desired top position



Use the operating buttons to move the product to the desired **TOP** position

Press **UP** and **STOP** simultaneously, until the product moves 2x.

The desired top position is set.

2. Set the desired bottom position



Use the operating buttons to move the product to the desired **BOTTOM** position.

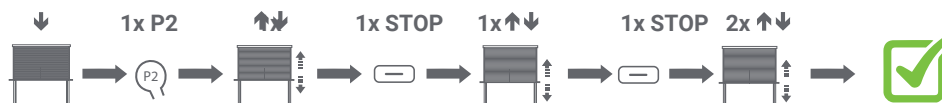
Press **DOWN** and **STOP** simultaneously, until the product moves 2x.

The desired bottom position is set.

**The roller blind is now ready for use.**

If you are not satisfied with the result of setting the end positions, go to Option A - adjusting positions or **Resetting factory settings**.

### Step 5 Setting the favorite position (If desired)



Go to the desired favorite position

Press 1x **P2** The product moves 1x up and down.

Press 1x **STOP** button. The product moves 1x up and down.

Press 1x **STOP** button. The product moves 2x up and down for confirmation.

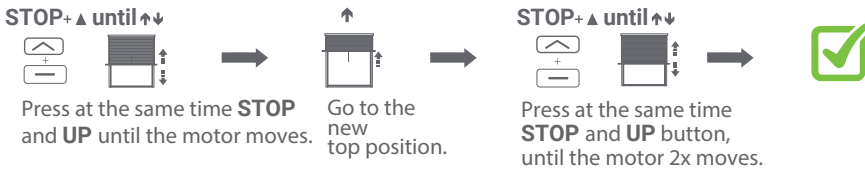
Press and hold **STOP** for 3 seconds to move to the favorite position.

Since the procedure is identical, to remove it repeat the steps.

**Additional settings**

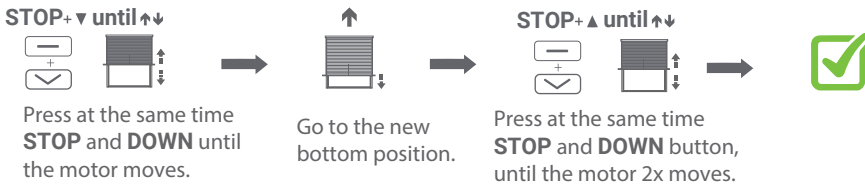
**Option A Adjusting the top position**

If adjustment is not possible, go to **Resetting factory settings**.



**Adjusting the down position**

If adjustment is not possible, go to **Resetting factory settings**.



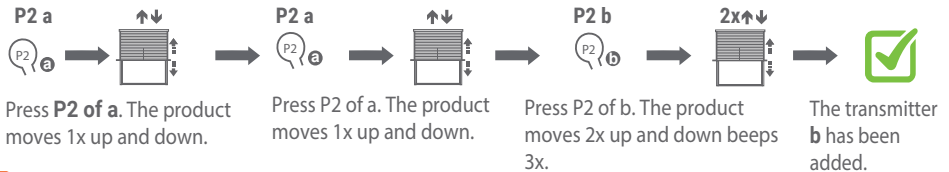
**Option B Learn Extra transmitter/channel**

Only possible when end limits are set.

**a** = Already existing transmitter/channel

**b** = New transmitter/channel

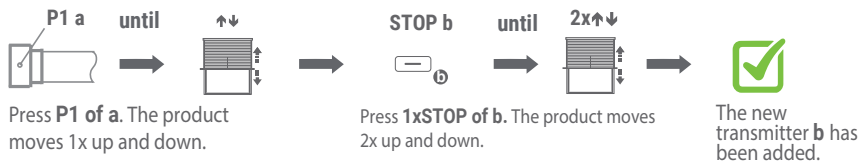
**Method 1**



**Make sure the new transmitter is in the desired channel.**

**Repeat the steps for deleting a transmitter**

**Method 2 (In case the old transmitter is lost or broken)**

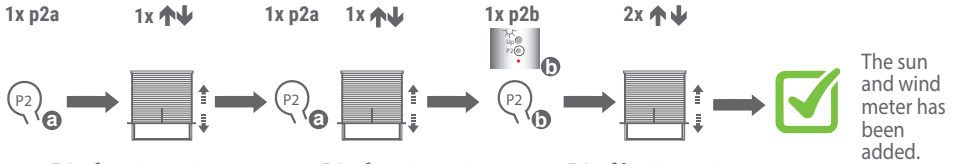


**Option C Pulse / jog control**



**Option D Sun- and windmeter (DD-116 and DD-118)**

**Add / remove**



Press **P2 of a**. The product moves 1x up and down and beeps 1x.

Press **P2 of a**. The product moves 1x up and down and beeps 1x.

Press **P2 of b**. The product moves 2x up and down and beeps 3x.

**By repeating the above, you can remove the sun and wind meter again.**

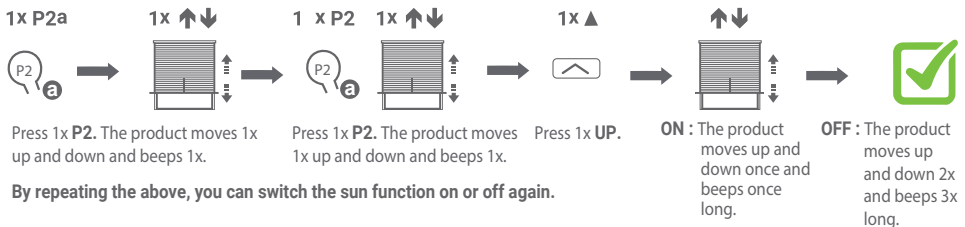
**Option E Safety function for wind sensor**



\* The factory default mode is ON; After the wind detection function is turned off, it can work normally without receiving the response signal for 30 minutes.

**NOTE** When a wind sensor has been connected to the motor this function be activated. When the motor does not receive a signal every 30min of the wind sensor the awning will go up.If the wind sensor is broken the awning will go in automatically after 30 minutes.

**Option F On / off sun function ( Factory setting = on)**



**By repeating the above, you can switch the sun function on or off again.**



**Additional settings P1 button**

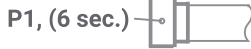
Can be used without a transmitter as an operating button.



1x P1

The product moves up, stops or goes down when pressed P1

Press 1x P1 on the motor.

**Switching off the receiver**

P1, (6 sec.)

until

2<sup>nd</sup> ↑↓

Press and hold P1 until the product moves up and down for the 2nd time.

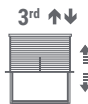
The Receiver switched off.

To reactivate the receiver, briefly press P1 once.

**Changing the direction of rotation**

P1, (10 sec.)

until

3<sup>rd</sup> ↑↓

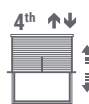
Press and hold P1 until the product moves up and down for the 3rd time.

The direction of rotation has changed.

**Resetting to factory settings**


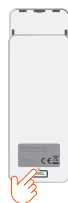
P1, (14 sec.)

until

4<sup>th</sup> ↑↓

Press and hold P1 until the product moves up and down for the 4th time.

Resets to factory settings.

 To apply new settings: go to step 1
**Changing Batteries**

Brel Netherlands B.V. is registered according to the transposition of Directive 2012/19EU (the WEEE Directive) and to the transposition of Directive 2006/66EC (the Battery Directive) at the Irish registry The Producer Register with the registration number 3408WB.