

Manual Brel 1-channel and 15-channel bi-directional emitter tilt motor

Type DD-2710H - DD-2712H

Read the manual before you begin the installation. If these instructions are not followed, this may lead to defects and injury in which warranty can't be claimed.

NOTE:

This manual can only be used to connect the hand-held transmitter to the motor, NOT to adjust the motor!

For all manuals, visit: www.brel-motors.nl

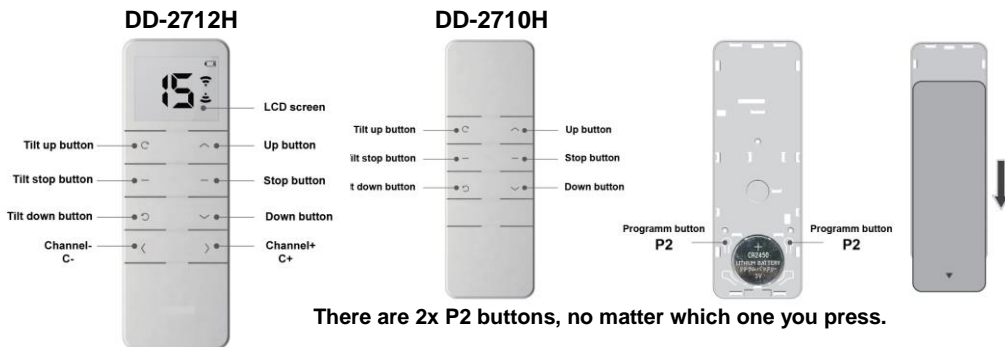
Technical specifications

- Battery type:
- Frequency:
- Emission power:
- Emission distance:

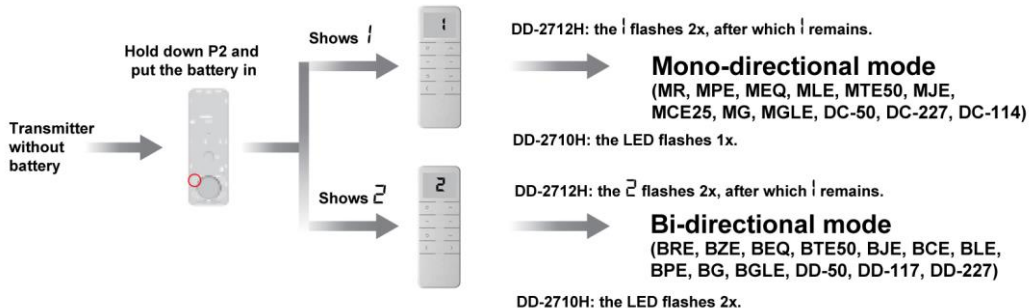
Type DD-2700H - DD-2702H

3V 1x CR2450
433,92MHz
10 MW
200 meter open field, 2 walls 35 meter.

Button specifications



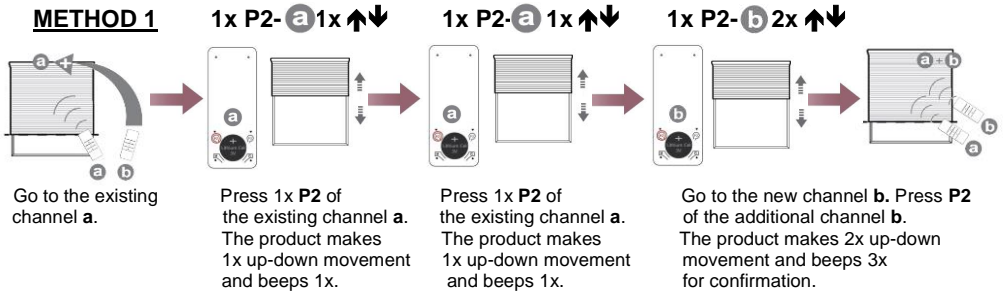
Mono-directional / bi-directional mode switching



If the motor does not respond, try another mode.

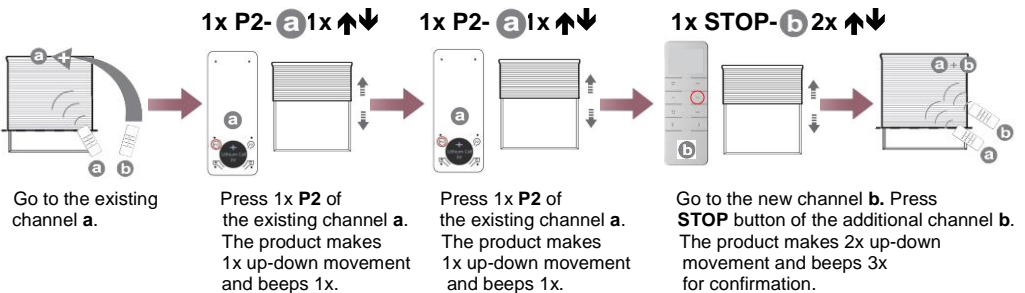
Pairing the remote control transmitter in the memory of the motor

METHOD 1



To delete a channel you have to repeat the above.

METHOD 2 (Bi-directional only)

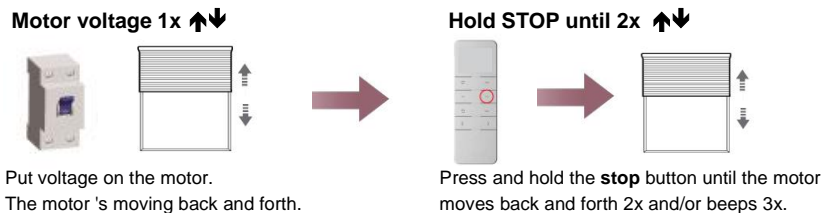


To delete a channel you have to repeat the above.

Adding a replacement handtransmitter, in case of loss/failure of the old hand transmitter

METHOD 3 Only Bi-directional

After power has been applied to the motor, press stop within 10 seconds.



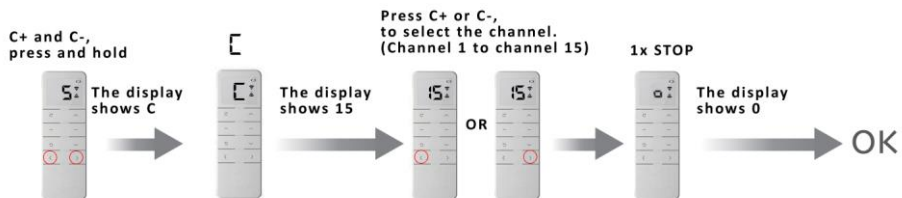
METHOD 4 Only Mono-directional (only possible if the end positions are set)

Press **P1** until 1x \updownarrow

$\blacktriangle \blacktriangledown$ simultaneously \updownarrow



OPTION 1 Set up number of channels(only for DD-2712H)



In programming mode; press the up or down button. You can stop quickly. If you want to change the locked channels, you can repeat above.

OPTION 2 Usermode

When the remote control is locked, you can operate the motor, but not program it.

