

Manual Brel 24mm electronic DC bi-directional radio middle motor

Type BJE24D



Read the manual before you begin the installation. If these instructions are not followed, this may lead to defects and injury in which warranty can't be claimed.

warning:

Children cannot recognize the dangers of electrical equipment and may therefore not work with it.

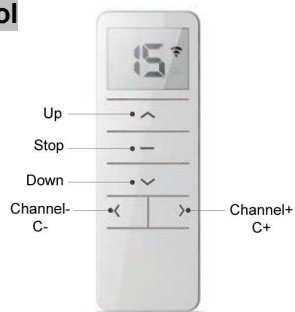
It is important to follow this instruction for your own safety.

1. Do not operate the motor in humid surroundings.
2. The motor must be installed correctly.
3. Keep the antenna in a good condition and do not shorten.
The antenna should not come into contact with other metal parts otherwise it will reduce the effect.
4. The motor must be protected from direct moisture influences.
5. BREL-Motors declares that this motor has been manufactured according to the guidelines of the CE standard 1999/5/EC



Functions remote control

DD-2702H



Programm-
button P2

Changing batteries



Works with all BREL transmitters:



**Scan the QR code here for
The manual to download and
View the instruction videos**

Visit our website www.BREL-HOME.com for
More manuals and information

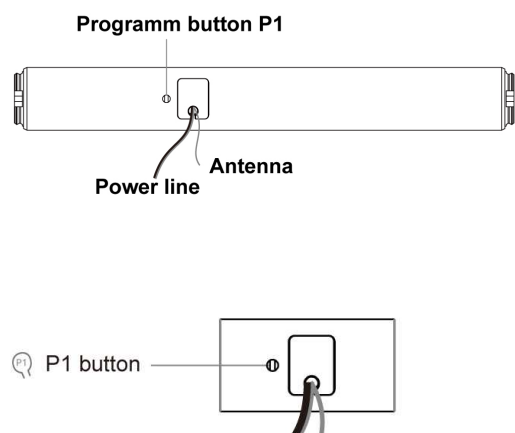


Technical data of the motor

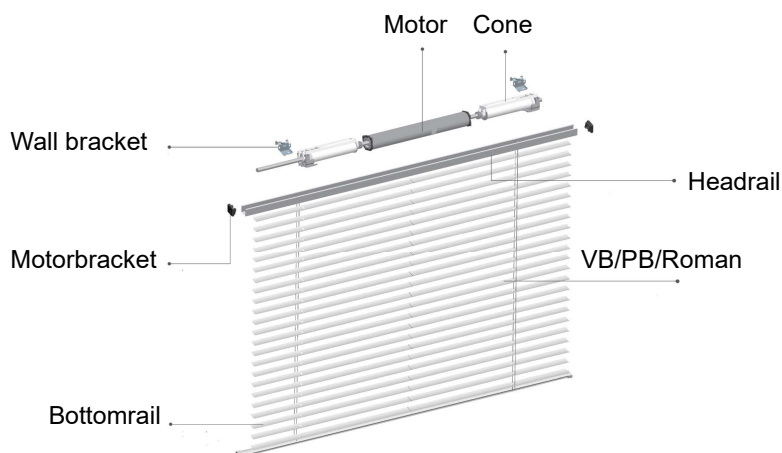
Type BJE24D

- Voltage motor: DC 12V
- Radiofrequency: 433.9 Mhz
- Power: 14 Watt
- Torque: 0.8 Nm
- Speed: 34 rpm
- Ampèrage : 1.18 A
- Moisture and dust protection: IP20
- Temperature range:
 - - Normaal use: -10°C tot +55°C

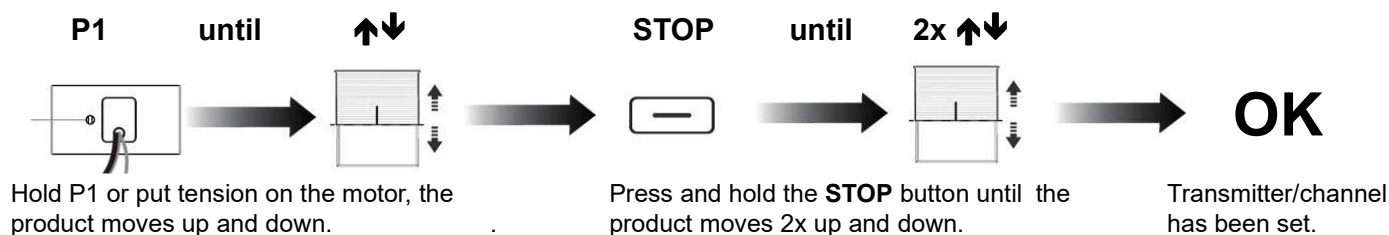
Functions motor



Installation of the motor



Step 1 Setting up the first remote/channel



If **NO** end positions are set, the product will move in the pulse / step operation. Go then to **STEP 2**.

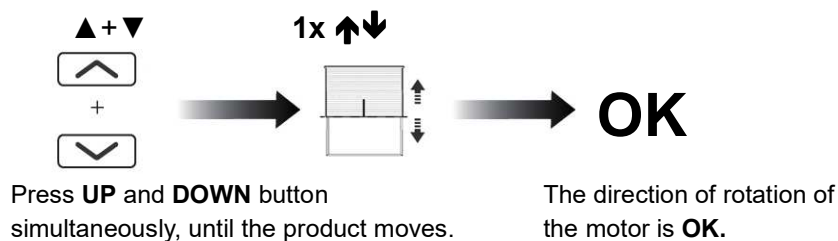


*If end positions are set, the product will continue to its end position. Go then to **STEP 4**.*

NOTE: The correct end positions may not be set. Then go to **OPTION A**.

Step 2 Adjusting the direction of rotation

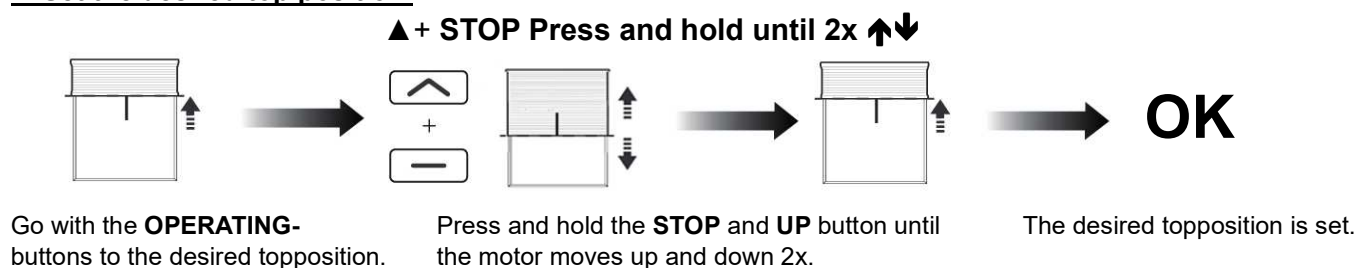
Only possible if no end positions are set, otherwise first **option B** (Delete end positions), after that, **Step 2**.



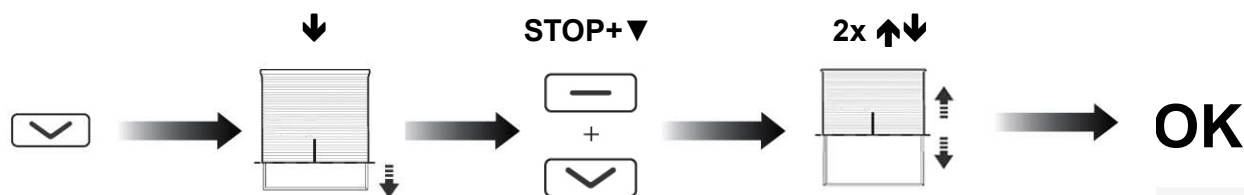
Step 3 Manually setting the end position.

If no end positions have been set, the motor only moves in pulse mode.

1. Set the desired top position.

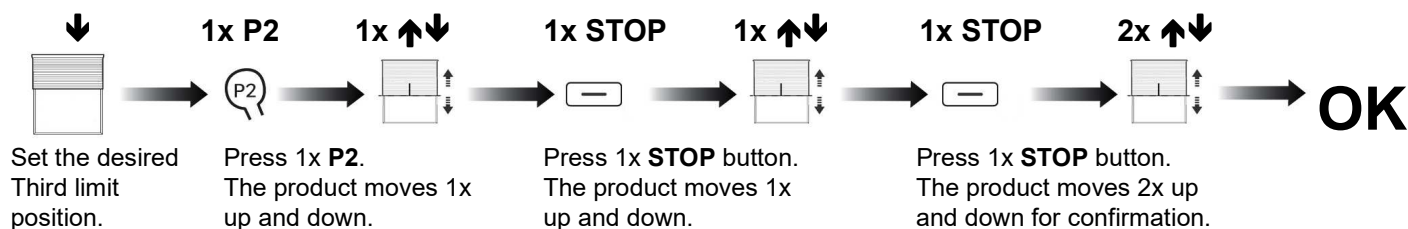


2. Set the desired down position.



Go with the **OPERATING-** buttons to the desired down position. Press and hold the **STOP** and **DOWN** button until the motor moves up and down 2x. The desired down position is set.

Step 4 Setting the desired third limit position (If desired)

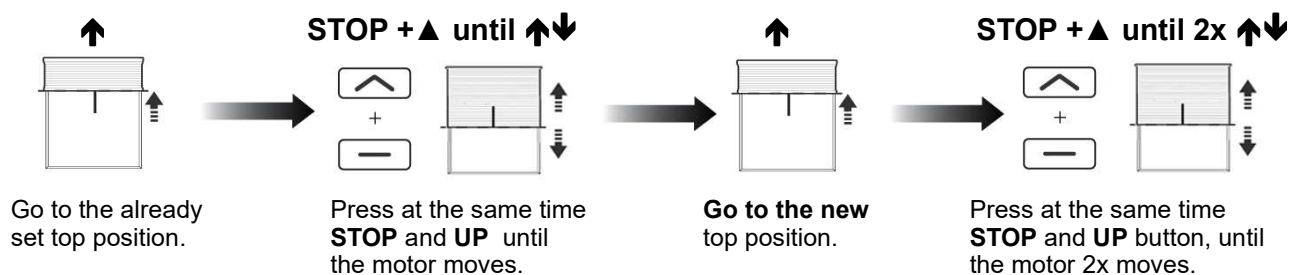


Press and hold STOP for 3 seconds to move to the set limit position.

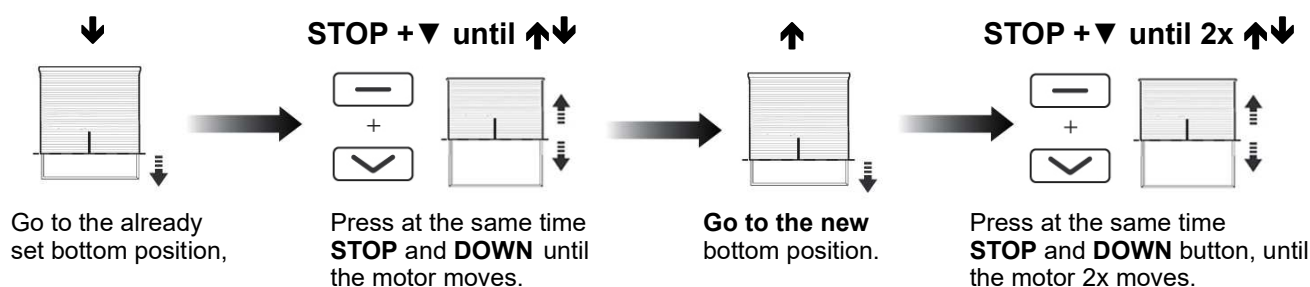
The motor is now ready for use!

Additional settings

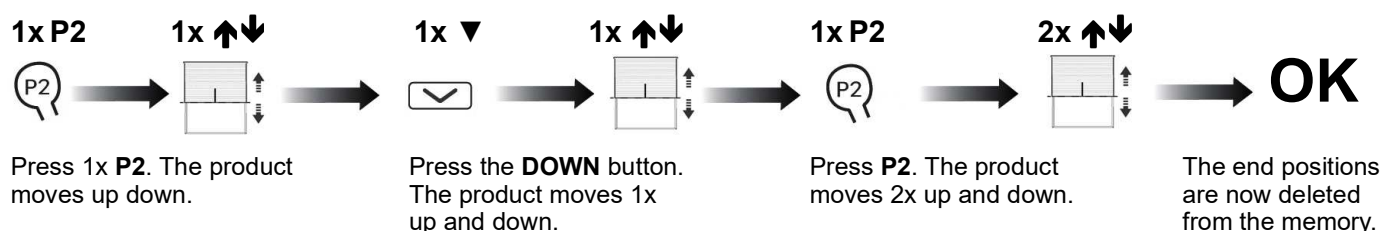
Option A Adjusting the top position If adjustment is not possible, go to Option B, then to Step 3.

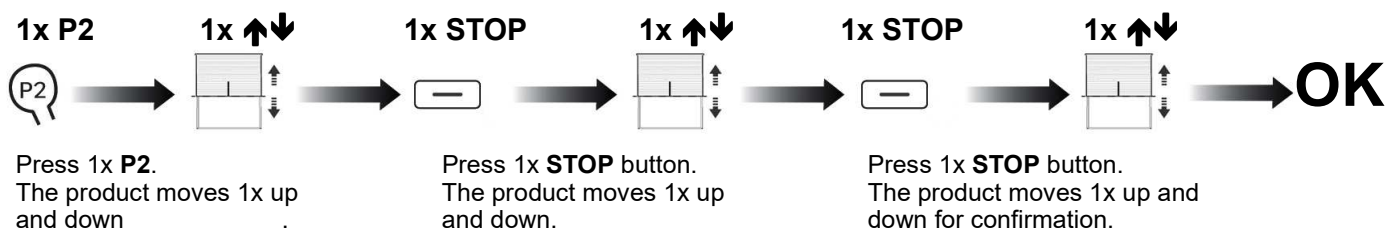
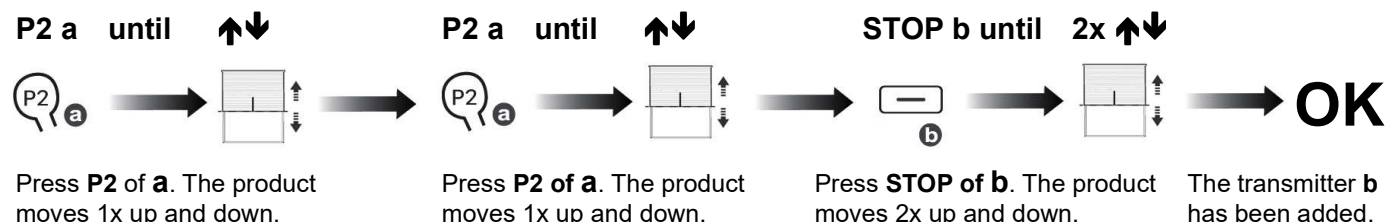
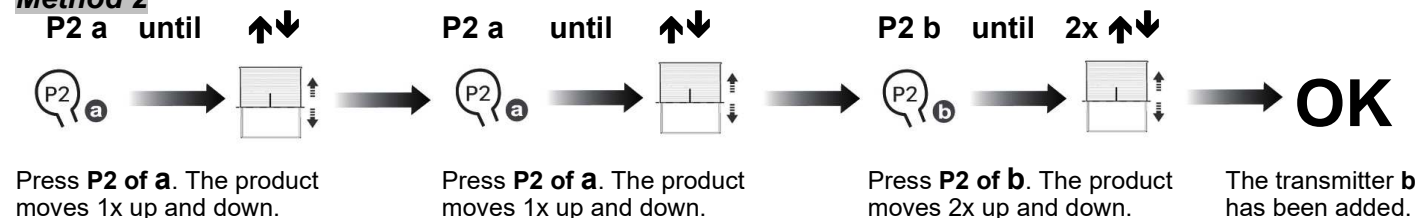
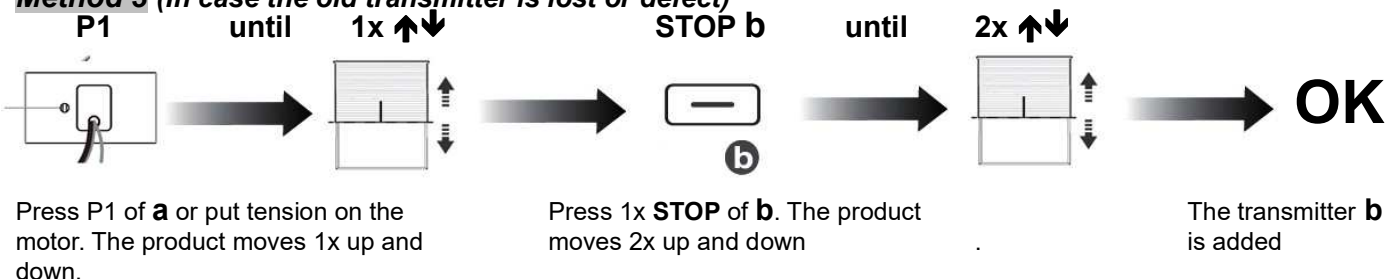
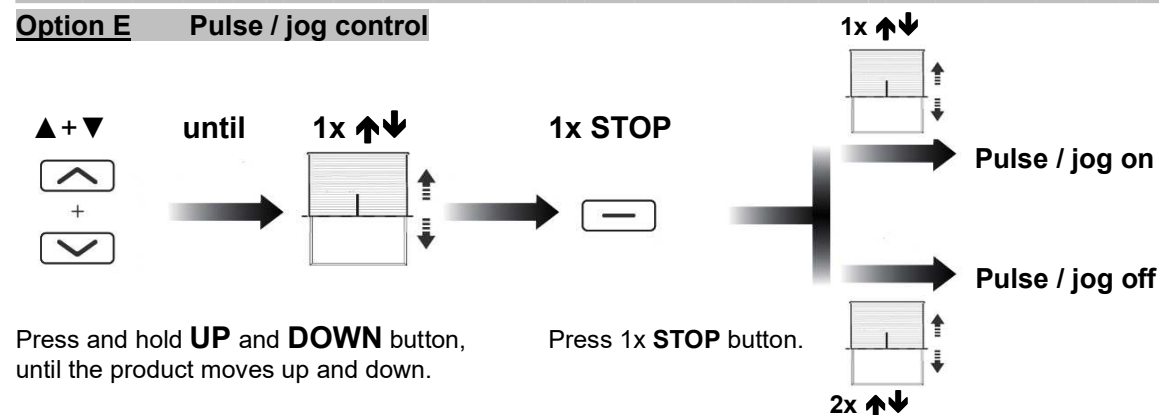


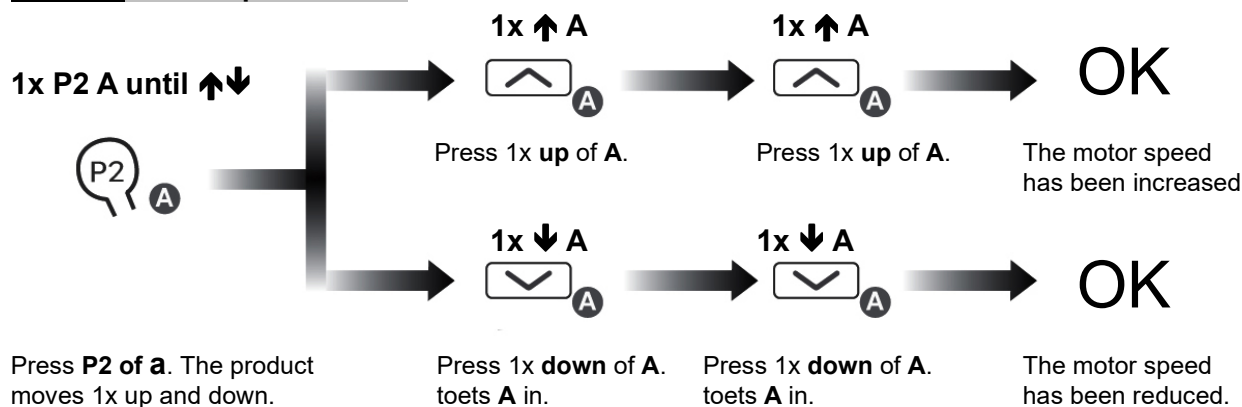
Adjusting the down position If adjustment is not possible, go to Option B, then to Step 3.



Option B Deleting the end limits



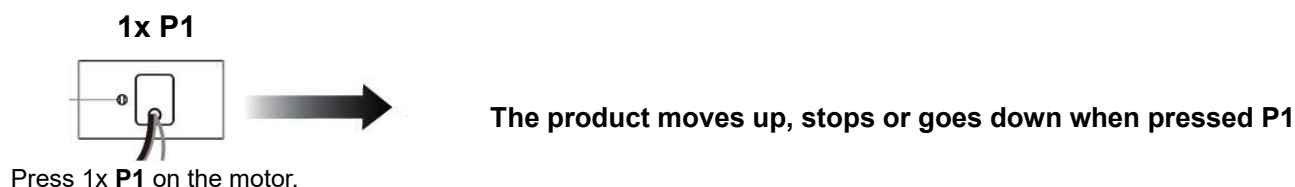
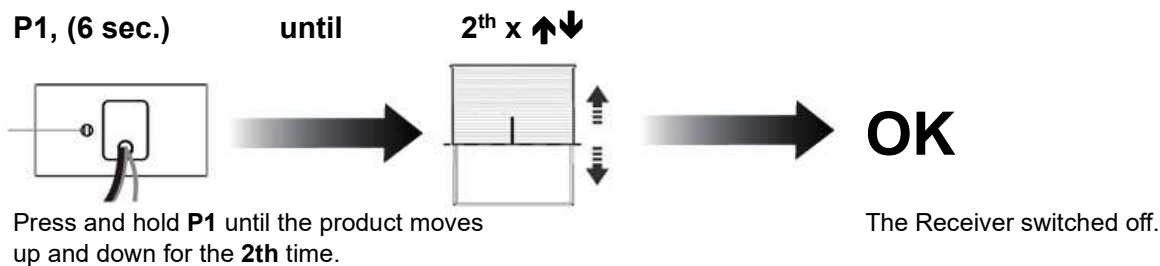
Option C Deleting the third limit position**Option D Learn new transmitter/channel while maintaining end limits.** *Only possible when end limits are set.***a** = Already existing transmitter**b** = New transmitter**Method 1***Repeating the above will remove the new transmitter/channel.***Method 2***Repeating the above will remove the new transmitter/channel.***Method 3 (In case the old transmitter is lost or defect)***Repeating the above will remove the new transmitter/channel.***Option E Pulse / jog control**

Option F Speed control

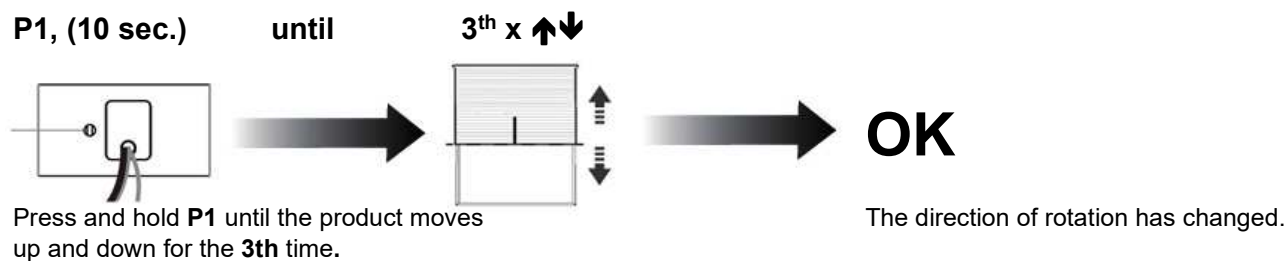
*If the motor does **NOT** react after this action, it is already at the highest or lowest speed.*

Additional settings P1 button

Can be used without a transmitter as an operating button

**Switching off the receiver**

*To reactivate the receiver, briefly press **P1** once.*

Changing the direction of rotation**Resetting to factory settings**